



Research Article

Lectotypification of *Dicliptera beddomei* (Acanthaceae): A strict endemic species to the Eastern Ghats of Andhra Pradesh, India.

Dhatchanamoorthy N.^{1*}, Ravikumar K.¹, Noorunnisa Begum S.¹ and Mayur D. Nandikar²

¹National Herbarium of Medicinal Resources used in Indian Systems of Medicines, Centre for Conservation of Medicinal Resources, The University of Trans-Disciplinary Health Sciences and Technology, Foundation for Revitalisation of Local Health Traditions (FRLHT), 74/2, Jarakabande Kaval, Attur Post, Via - Yelahanka, Bengaluru - 560 064, India.

²Naoroji Godrej Centre for Plant Research (NGCPR), 431 Lawkim Campus, Shindewadi, Shirwal, Satara, Maharashtra, 4128012, India.

Abstract: *Dicliptera beddomei* C.B. Clarke is a strict endemic species known from the Eastern Ghats of Andhra Pradesh, India. No type has been mentioned in the protologue, therefore the binomial has been lectotypified.

Key words: *Dicliptera beddomei*; Nallamala; Eastern Ghats; Lectotype

Introduction

The genus *Dicliptera* Juss. falls with subtribe *Justiciinae* of the Acanthaceae (Scotland & Vollesen, 2000), it consists about 228 species known from temperate and tropical regions of both the old and New World (Plant List, 2011). In India, the genus represented by 25 species and 4 varieties (Karthikeyan, *et al.*, 2009).

During the process of confirming the valid names, cross checking the identity for the regional floristic studies, national (CAL, DD and MH) and virtual herbaria (BM and K) have been studied. During this consultation, it has been found that in the protologue of *Dicliptera beddomei* C.B. Clarke no type has been cited explicitly. Therefore, to execute Art. 9.2 of ICN (McNeill *et al.*, 2012) typification is warranted and has been lectotypified in the present communication.

Nomenclature

Dicliptera beddomei C.B. Clarke in Hooker. f. Fl. Brit. India 4: 551. 1885.

Lectotype (designated here): India. Andhra Pradesh; Nallamallaya (Nallamala Hills), Beddome, s. n. (BM000950073!) (Figure.1).

*Corresponding Author:

Dr. N. Dhatchanamoorthy,
Plant Systematics, Ethnobotany,
The University of Trans-disciplinary Health Sciences and Technology, Bengaluru, India.
E-mail: dhatcha@gmail.com

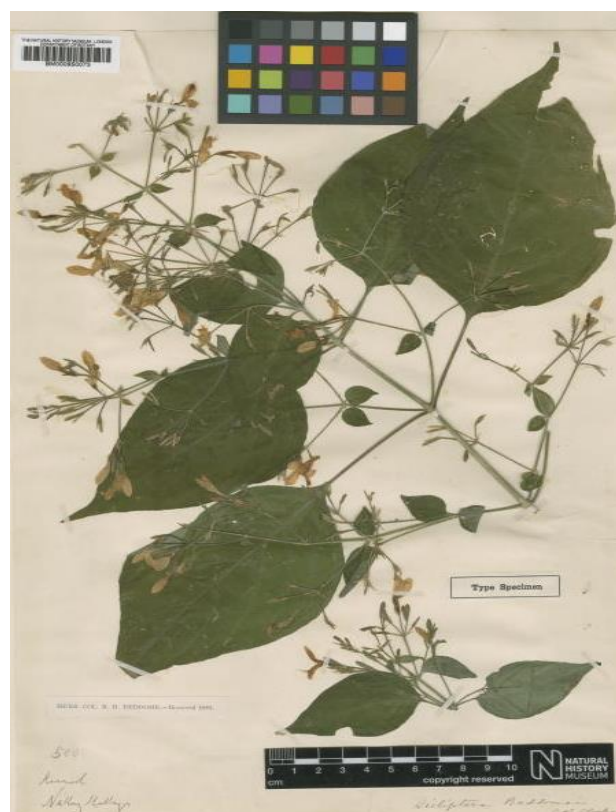


Figure 1. Lectotype of *Dicliptera beddomei* C.B. Clarke Beddome. s.n. at Cat. (BM000950073!). The Trustees of the Natural History Museum, (London) is reproduced with permission.

Dicliptera beddomei C.B. Clarke is a strict endemic species of the Eastern Ghats of India (Pullaiah *et al.*, 2011; Sankara Rao *et al.*, 2016) described by Clarke (1885), based on the collections by Beddome from Nallaymallaya Hills (now pronounced as Nallamala Forest) of Andhra Pradesh, India. Protologue explicated only the locality and the collector name. Beddome's collections are known to be placed at CAL, MH, DD, K and BM. After perusal of these herbaria we are able to trace two specimens of *D. beddomei*, collected by Beddome and placed at BM (BM000950073!) and K (K000884387!). While comparing both the specimens with protologues, the former sheet from BM has an exact locality and annotations by C.B. Clarke as it in latter specimen at K with addition of year of collection. Both the specimens constitute as original material and are syntypes.

To execute the Art. 9.2 of ICN (McNeill & al. 2012), it has been necessary to designate one of the syntypes as lectotypes. Therefore, the specimen placed at BM (BM000950073!) which is explicit the exact locality 'Kurnool' and has been selected here as lectotype. The specimen from K (K000884387!) reserved as a syntype.

Acknowledgements


The authors are grateful to the Director, Botanical Survey of India, Kolkata for according permission to pursue the BSI Herbaria (CAL & MH).

References

1. Clarke, C.B. (1885). Acanthaceae. *In*: Hooker, J. D. (Ed.), The Flora of British India. Vol. 4.- L. Reeve & Co., London, pp. 515-523. Print.
2. Karthikeyan, S., Sanjappa, M. and Moorthy, S. 2009. Flowering Plants of India, Vol. I. - Botanical Survey of India, pp 30-32. Print.
3. Mc Neill, J., Barrie, F.R., Buck, W.R., Demoulin, V., Greuter, W., Hawksworth, D.L., Herendeen, P.S., Knapp, S., Marhold K., Prado, J., Prud'homme van Reine, W.F., Smith G.F., Wiersema, J.H. and Turland, N.J. (2012). International code of Nomenclature for algae, fungi and plants (Melbourne code). Regnum veg. 154. Koeltz Scientific Books Koenigstein. Print.
4. Scotland, R.W. and Vollesen, K. (2000). Classification of Acanthaceae. *Kew Bulletin*. 55: 513-589. Print.
5. Pullaiah, T., Sandhya Rani, S., Karuppusamy, S., (2011). Flora of Eastern Ghats. Vol. 4. Daya Publishing House, New Delhi, India. Print.
6. Sankara Rao, K., Arun Singh R., Deepak Kumar, Raja K. Swamy and Navendu Page (2016). Digital Flora of Eastern Ghats. website: <http://easternghats.ces.iisc.ernet.in>

Cite this article as:

Dhatchanamoorthy N., Ravikumar K., Noorunnisa Begum S. and Mayur D. Nandikar. Lectotypification of *Dicliptera beddomei* (Acanthaceae): A strict endemic species to the Eastern Ghats of Andhra Pradesh, India. *Annals of Plant Sciences* 8.5 (2019) pp. 3551-3552.

 <http://dx.doi.org/10.21746/aps.2019.8.5.2>

Source of support: Nil; Conflict of interest: Nil.